

MXR 2

Color Mixing Scroller

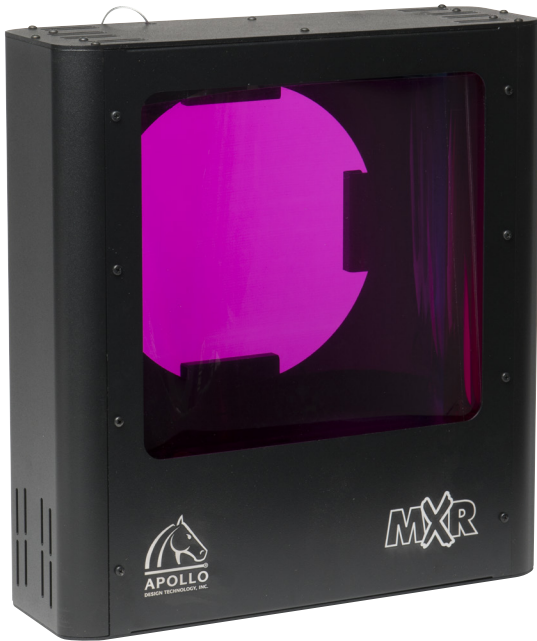


Table Of Contents

Introduction	2
Product Description	2
Safety Information	3
Quick Start	4
Using the MXR 2	5-7
Controls and Indicators	5
Mounting	6
Powering Up	6
Menu Tree	7-9
Addressing	7
Fan	8
Speed	9
Reset	9
Factory Defaults	10
Manual Reset	10
Gel String Information	11
Gel String Installation	11
Gel String Colors	12
Gel Shield	13
Color Matching Table	14-17
Troubleshooting	18
Specifications	19
Warranty	20



Introduction

Since 1992, Apollo Design Technology, Inc. has been one of the world's leading innovators, manufacturers and distributors of gobos, color filters, lights and related equipment and accessories for the lighting industry.

We are continually engineering new products to help you create and execute the designs of your dreams for theaters, bands, advertising, touring companies, television, motion pictures, museums, retail and architecture.

Apollo Design is recognized for creating innovative and award-winning products of superior quality and value. Focused on you, our goal is to ensure unparalleled support from the initial conversation to after sales service.

Our lighting experts and engineers will consult with you on ways to use our standard products or engineer custom solutions. Allow your imagination to run free. Let the Apollo Design team help you create the lighting design you only imagined.

There is virtually no limit to what we can do together.



Joel Nichols, Owner/CEO
Apollo Design Technology

Product Description

Congratulations on the purchase of your new MXR 2 color mixing scroller. The MXR 2 is one of the most cost-effective, dependable and user-friendly scrollers available on the market. The scroller uses 2 strings to provide innovative color selection give you amazing color flexibility.



Safety Information



CAUTION! This symbol designates an item that will cause damage to the MXR 2 if ignored.



WARNING! This symbol designates an item that could cause injury or death if ignored.

- Be sure to read and understand all instructions in this manual.
- The MXR 2 is designed for indoor applications and should not be exposed to moisture.
- There is a risk of fire, shock or injury if the MXR 2 is not used as specified.
- Servicing the MXR 2 should be undertaken by qualified personnel only.
- The MXR 2 is not intended for residential use.
- Safety cables must be used when installing the MXR 2. Apollo is not responsible for damage or injury resulting from improper use of safety cables.

Quick Start

Connect MXR 2's source to an Apollo Smart Power™ power supply or compatible unit.

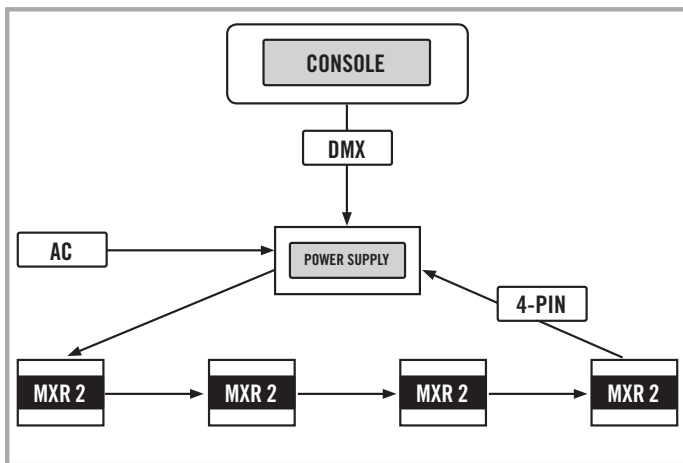


Wybron Coloram II or Wybron IT power supplies are not compatible and cannot be used. Serious damage to the MXR 2 will occur if these power supplies are used. Damage caused by an incompatible power supply is not covered by the warranty.



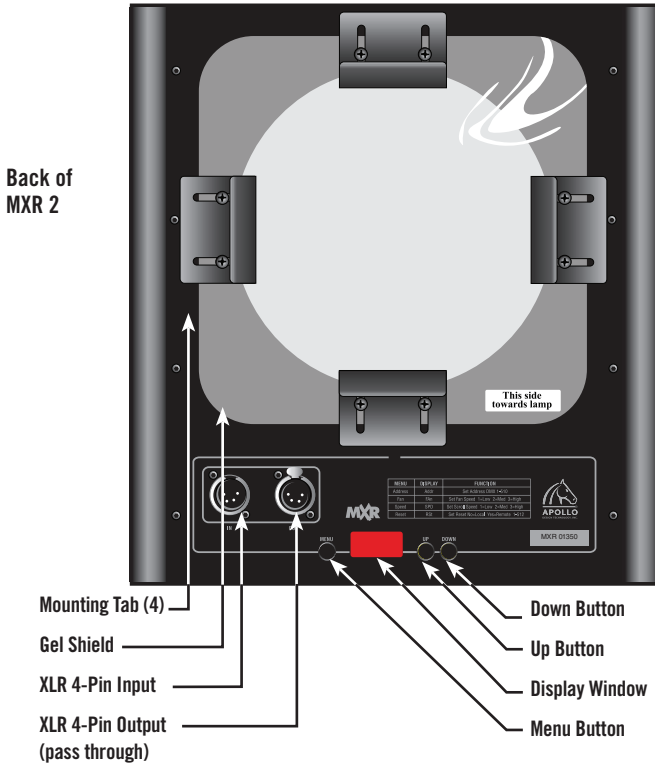
Do not apply power to a lighting fixture without first powering up the MXR 2. Heat from the lighting fixture will cause damage to the MXR 2 and the gel strings.

- Connect 4-pin cable from the power supply to the first MXR 2. Continue connecting up to four MXR 2's on a 200 watt circuit.
- Connect the last MXR 2 to the power supply.
- Connect 5-pin DMX cable to the power supply.
- Plug the power supply in to the appropriate line voltage.
- The MXR 2's will complete a homing sequence.
- Address each MXR 2 with a valid DMX value. Remember the MXR 2 requires 3 DMX channels.
- Check for control of the MXR 2 from the lighting console.



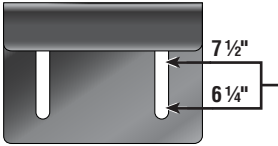
Using the MXR 2

CONTROLS and INDICATORS



Using the MXR 2

MOUNTING



- Adjust the 4 mounting tabs to fit the gel frame brackets on the lighting fixture.
- The mounting bracket slot are provided to aid positioning for common frame sizes, 6 1/4" and 7 1/2".



A safety cable is provided with each MXR 2. Attach the safety cable to a pipe or truss.



Do not apply power to a lighting fixture without first powering up the MXR 2. Heat from the lighting fixture will cause damage to the MXR 2 and the gel strings.

POWERING UP

Use only Apollo cable or other approved cable. Approved cable should have two conductors of 14 AWG wire for power and two shielded and twisted conductors of 22 AWG wire for data.

Pin "OUT" for the 4-pin connector:

Pin 1 = 24 volts DC Ground (-)	Pin 3 = DMX data (+)
Pin 2 = DMX data (-)	Pin 4 = 24 volts DC (+)

- Insert a 4-pin XLR connector into the plug on the MXR 2 marked "IN". Additional MXR 2's, Smart Color® or Smart Move® products may be daisy chained together using the "OUT" plug.
- Apply power and DMX signal to the MXR 2. A short homing sequence will occur. The fan will run at full speed during homing.
- The MXR 2 will finish homing when the clear frame of each gel string is parked in the aperture.
- If a valid DMX signal is present, the LED display will enter "HOME" mode. If DMX is not present the LED window will flash "001".

Menu Tree

ADDRESSING

ADDRESS “Addr”

- DMX address up
- DMX address down

FAN “FAn”

- “=_1_” Low speed fan
- “=-2-” Medium speed fan
- “=-3-” High speed fan
- “=PL1” Sets DMX fan speed control to start address +1
- “=512” Sets DMX fan speed control to channel 512

Speed “SPd”

- “=_1_” Sets motor speed to low
- “=-2-” Sets motor speed to medium
- “=-3-” Sets motor speed to high

Reset “rSt”

- “=NO” Remote reset is off
 - “=YES” Allows for Smart Color® Pro reset from console
- Enter DMX address for reset control

- Each MXR 2 can respond to a unique start address. To change the DMX address press the “MENU” button once. “Addr” will appear. Press “Menu” a second time to select the address mode. Pushing the “UP” and “DOWN” buttons will step through DMX addresses. The addresses advance slowly for the first three seconds, then the DMX addresses advance or retreat at a much faster rate.
- The MXR 2 is a three channel device. The first channel controls the front gel string, the second channel controls the rear gel string and the third channel controls the fan speed.
- After the DMX start channel appears in the LED window, press “MENU” to set the address.
- The LED display will show “Addr” when the addressing sequence is complete.

Menu Tree

FAN

- From the “HOME” display press the “MENU” button once and the “DOWN” button once.
- With “FAN” in the display press the “MENU” button.
- Selecting “_1_” will set the fan to run constantly at low speed. Use this setting when the MXR 2 is being used with low wattage fixtures or in locations requiring quiet operation.
- Selecting “-2-” will set the fan to run constantly at medium speed.
- Selecting “-3-” will set the fan to run constantly at high speed. Use this setting when the MXR 2 is being used on high wattage fixtures or when maximum cooling is required.
- Selecting “PL2” will set the fan to be controlled at the MXR 2’s DMX start address plus 2. For example, if the start address for the MXR 2 is channel 001 the fan will be controlled by channel 003. With the fader for channel 003 at 0%, the fan will operate at high speed. With the fader for channel 003 at 100% the fan will operate low speed.
- Selecting “512” will set the fan to be controlled by DMX channel 512.

Menu Tree

SPEED

- From the “HOME” display press the “MENU” button once and the “DOWN” button twice.
- With “SPd” in the display press the “MENU” button.
- Selecting “_1_” will operate the motors at low speed. Use this setting when quieter operation is favored over high gel string speed.
- Selecting “-2-” will operate the motors at medium speed.
- Selecting “-3-” will operate the motors at high speed. Use this setting when faster gel string speed is favored over quieter operation.

RESET

- From the “HOME” display press the “MENU” button once and the “DOWN” button three times.
- With “rSt” in the display press the “MENU” button.
- Select “NO” when remote reset of the MXR 2 is not required.
- Select “YES” when remote reset is required.
- With “YES” in the display press the “MENU” button.
- When “000” appears in the display window enter a valid DMX address chosen to control remote reset. When this DMX channel is raised to 100% for more than 1 second, the MXR 2 will reset.

Factory Defaults

- Factory default setting for the DMX address: “001”.
- Factory default setting for the fan speed: “-2-”, medium.
- Factory default setting for the gel string speed: “-2-”, medium.
- Factory default setting for reset: “NO”.
- Default address for reset: “000”.

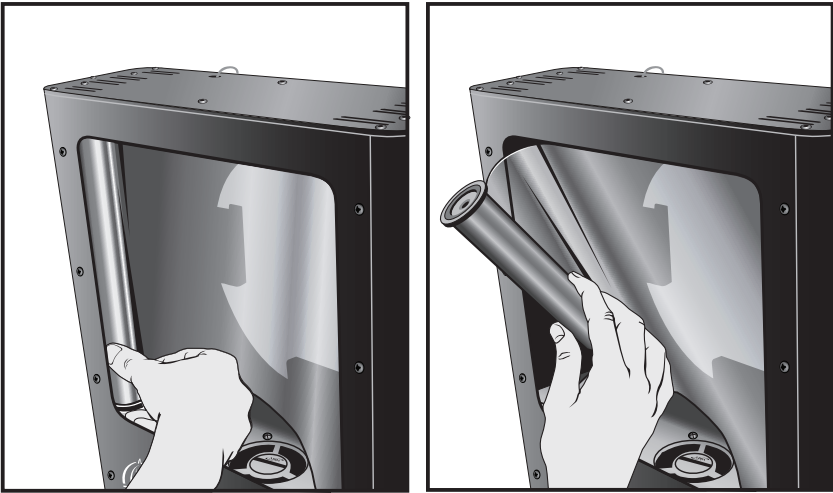
Manual Reset

- To manually reset the MXR 2, press both “UP” and “DOWN” at the same time for 4 seconds.

Gel String Information

- The MXR 2 is shipped with the gel string installed at Apollo Design Technology, Inc. If you need to change a gel string please follow instructions.
- Use only MXR 2 gel strings sold by Apollo. Color mismatch will occur if other gel strings are used.
- The MXR 2 has been designed for easy installation and removal of gel string assembly.

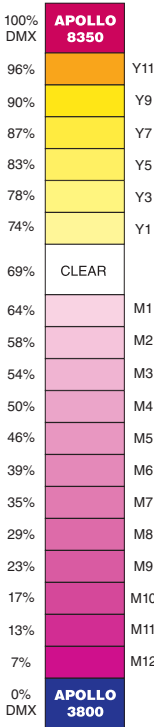
Gel String Installation



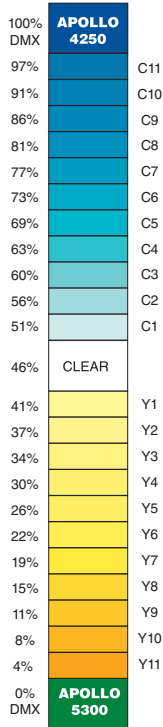
- Stand the scroller on a flat surface facing you.
- DISCONNECT THE POWER.
- Grasp a gel roller with one hand.
- Push the gel roller towards the top of the MXR 2.
- Remove excess slack from gel string by holding either roller and gently turning the other roller in the opposite direction
- Apply power and ensure the gel string is positioned between the front cover and the cooling fan for proper ventilation.

Gel String Colors

FRONT STRING



BACK STRING



The MXR 2 has two gel strings.

- The back string has graduations of yellow and cyan gel. Apollo AP5300 Apollo Green is on the header. The header should be installed on the left side of the MXR 2 as you look at it from the front. The tail of the back string is Apollo AP4250 Apollo Blue. The tail should be installed on the right side of the MXR 2 as you look at it from the front.
- The front string has graduations of yellow and magenta gel. Apollo AP3800 Cowboys & Indigo is on the header. The header should be installed on the left side of the MXR 2 as you look at it from the front. The tail is Apollo AP8350 Bludgeon Red. The tail should be installed on the right side of the MXR 2 as you look at it from the front.
- Apollo Gel Shield is installed on the back of the MXR 2. The shield filters out harmful ultraviolet and infrared rays that could damage the gel strings. Be sure the shield is in place before operating the MXR 2.



Gel Shield

Apollo Gel Shield is a 7 mil polyester sheet that reflects infrared energy, preventing gels from absorbing IR energy as heat. Gel Shield is ideal for gel and scroller applications on fixtures 1000 watts or less.

Because it is an excellent reflector of infrared energy, the Gel Shield protects the gels' color integrity and extends the life of gel and gel strings. Allow air space between Apollo Gel Shield and color filter in order for hot air to escape. Gel Shield extends gel filter life without interfering or reducing light transmission.

Color Matching Table

Apollo Numbering System

1000's = Diffusions

3000's = Violets

5000's = Greens

7000's = Oranges

2000's = Color Corrections

4000's = Blues

6000's = Yellows

8000's = Reds

APOLLO Number & Name		Front String % Channel 1	Front String % Channel 2	ROSCO Number	Front String % Channel 1	Front String % Channel 2	LEE Number	Front String % Channel 1	Front String % Channel 2
AP3000	Simply Mauvelous	24	20	R01	46	22	L002	33	49
AP3050	Purple Mist	27	63	R02	54	30	L003	64	46
AP3100	Precious Purple	21	64	R302	—	—	L004	54	34
AP3150	Sour Grape	6	64	R03	50	26	L007	69	37
AP3180	Purplexed	43	57	R303	39	15	L008	35	15
AP3200	Submissive Lavender	56	57	R04	50	26	L009	59	30
AP3230	Lavender Retriever	48	58	R304	50	22	L010	87	20
AP3250	Dominant Lavender	44	62	R05	54	30	L013	60	26
AP3300	Whispering Lavender	59	57	R305	—	—	L015	54	7
AP3350	Breathless Lavender	54	58	R06	64	34	L017	46	20
AP3400	Luscious Lilac	48	65	R07	69	37	L019	17	4
AP3450	Bodacious Blueberry	16	80	R08	58	30	L020	49	8
AP3500	Apollo Lavender	38	69	R09	58	30	L021	40	6
AP3520	Alexander the Grape	34	71	R10	90	19	L022	25	6
AP3540	Malice Blue	31	76	R310	74	19	L024	17	15
AP3550	Late Night Lavender	17	79	R11	58	15	L025	24	10
AP3600	Flirtatious Lavender	22	71	R12	87	11	L026	6	9
AP3700	Groovy Grape	12	75	R312	64	8	L027	100	50
AP3800	Cowboys and Indigo	0	46	R13	58	26	L029	100	25
AP3850	King Congo Blue	3	100	R313	58	11	L035	50	34
AP3900	Voodoo Lavender	15	91	R14	54	11	L036	44	40
AP4050	Seductive Blue	16	93	R15	54	8	L039	50	50
AP4100	Mournful Blue	5	89	R16	54	15	L046	6	29
AP4130	Blurple	23	80	R316	50	19	L048	18	60
AP4150	New York Blue	16	93	R17	46	19	L049	6	62
AP4200	Bright Blue	22	89	R317	46	19	L052	45	60
AP4250	Apollo Blue	70	100	R18	50	15	L053	59	55
AP4270	Rhythm and Blue	36	77	R318	39	11	L058	17	73
AP4300	London Blue	31	85	R19	13	4	L061	58	59
AP4350	Sultry Blue	36	89	R20	46	8	L063	64	60
AP4400	After Hours Blue	20	97	R21	46	4	L068	34	87
AP4450	Heavenly Blue	47	89	R321	39	11	L071	—	—
AP4500	Ozone Blue	49	78	R22	23	8	L075	28	82
AP4600	Electric Blue	44	79	R23	35	8	L079	22	89
AP4650	Crisp Blue	44	75	R324	13	11	L085	17	92
AP4680	Blue Moon	45	75	R24	17	15	L088	86	60
AP4700	Timid Blue	53	66	R25	17	8	L089	86	75
AP4720	Baby Boy Blue	58	62	R325	—	—	L090	96	96
AP4750	Monday Morning Blue	53	64	R26	100	8	L100	87	21
AP4800	Ice Blue	56	66	R27	100	63	L101	87	7
AP4830	Blue My Mind	66	61	R30	39	19	L102	58	15

The manufacturer comparisons shown reflect close or similar matches only.

Color Matching Table

Apollo Numbering System

1000's = Diffusions

3000's = Violets

5000's = Greens

7000's = Oranges

2000's = Color Corrections

4000's = Blues

6000's = Yellows

8000's = Reds

APOLLO Number & Name		Front String % Channel 1	Front String % Channel 2	ROSCO Number	Front String % Channel 1	Front String % Channel 2	LEE Number	Front String % Channel 1	Front String % Channel 2
AP4850	Robin's Egg Blue	58	75	R31	39	26	L103	58	30
AP4870	Bluetylicious	55	81	R331	46	26	L104	59	7
AP4900	Island Blue	71	84	R32	23	15	L105	45	6
AP4950	Caribbean Blue	70	79	R332	17	15	L106	6	9
AP4970	Atlantic Green Blue	53	97	R33	50	34	L107	44	34
AP4990	Hero Blue	38	93	R333	54	37	L108	50	25
AP5300	Apollo Green	—	—	R34	46	30	L109	44	30
AP5400	Rock N Roll Green	94	97	R35	50	34	L110	44	37
AP5430	Green Gello	91	0	R36	39	30	L111	39	36
AP5500	Neptune Blue Green	79	96	R336	39	34	L113	7	20
AP5600	Montego Bay Green	71	74	R37	50	37	L115	73	84
AP5700	Kelly Green	83	88	R337	46	37	L116	78	96
AP5800	Envy Green	85	76	R38	50	34	L117	64	64
AP5900	Cactus Juice Green	88	79	R39	7	34	L118	56	86
AP5940	Putting Green	92	67	R339	7	37	L119	20	97
AP5960	Margarita Green	80	58	R40	35	15	L120	14	91
AP6100	Chablis Yellow	73	45	R41	17	11	L121	91	67
AP6200	Banana Yellow	92	45	R42	7	15	L122	87	73
AP6300	Neon Yellow	91	27	R342	100	60	L124	92	90
AP6400	Pilsner Yellow	61	18	R43	23	30	L126	6	64
AP6500	Bikini Yellow	86	7	R343	17	30	L127	34	29
AP6600	Harvest Gold	63	36	R44	29	37	L128	6	51
AP6700	Whiskey Tint	60	25	R344	23	41	L130	69	46
AP6800	Mustard	57	10	R45	7	26	L131	74	77
AP6900	Butterscotch	57	6	R46	100	63	L132	39	91
AP7050	Fatherless Amber	57	32	R346	13	41	L134	45	17
AP7100	Hot Cocoa	53	28	R47	23	69	L135	24	6
AP7150	Santa Fe Amber	52	20	R347	7	63	L136	48	58
AP7200	Adobe Orange	46	20	R48	23	56	L137	45	64
AP7250	Nude Gold	57	27	R348	17	60	L138	83	60
AP7300	Bashful Amber	54	31	R49	7	60	L139	96	96
AP7330	Rust Assured	52	10	R349	7	60	L140	58	73
AP7350	Fools Gold Amber	47	8	R50	23	11	L141	49	89
AP7400	Apollo Gold	52	20	R51	54	51	L142	72	35
AP7420	Just Peachy	45	22	R351	58	46	L143	49	76
AP7450	Golden Amber	47	5	R52	46	56	L144	58	75
AP7500	Burnt Orange	47	14	R53	64	46	L147	50	15
AP7550	Spiced Rum Amber	43	13	R353	46	60	L148	12	23
AP7600	Apollo Orange	31	8	R54	54	56	L151	55	33
AP7630	Peach My Interest	55	33	R55	50	60	L152	53	29
AP7650	Coral Amber	48	31	R355	46	63	L153	50	33
AP7670	Salmon Ila	43	27	R56	0	46	L154	55	33
AP7700	Peach Amber	52	27	R356	46	60	L156	55	26
AP7750	Sailor's Delight Orange	25	4	R57	39	63	L157	35	25
AP7770	Hot Wings	23	4	R357	13	77	L158	35	8
AP7800	Apricot Orange	42	18	R58	17	73	L159	64	40
AP7850	Hot Lava Orange	22	4	R358	7	73	L161	45	77
AP7900	Kiss Me Tint	57	41	R59	0	30	L162	59	33
AP8100	Mango Craze	21	13	R359	17	77	L164	13	9

The manufacturer comparisons shown reflect close or similar matches only.

Color Matching Table

Apollo Numbering System

1000's = Diffusions

3000's = Violets

5000's = Greens

7000's = Oranges

2000's = Color Corrections

4000's = Blues

6000's = Yellows

8000's = Reds

APOLLO Number & Name		Front String % Channel 1	Front String % Channel 2	ROSCO Number	Front String % Channel 1	Front String % Channel 2	LEE Number	Front String % Channel 1	Front String % Channel 2
AP8200	Scandalous Scarlet	16	16	R60	58	60	L165	44	79
AP8250	Vixen Red	13	9	R360	58	60	L166	23	18
AP8300	Diva Red	6	9	R61	58	60	L169	58	50
AP8310	Cherry Lewis	7	11	R361	46	73	L170	44	58
AP8320	Tasty Apple Red	6	4	R62	58	60	L172	63	90
AP8350	Bludgeon Red	100	45	R362	54	63	L174	50	67
AP8400	Lipstick Red	10	20	R63	58	60	L176	45	26
AP8430	Front Rose	21	21	R363	69	60	L179	54	8
AP8450	Spanked Pink	43	35	R64	50	73	L180	13	77
AP8500	Tease Pink	43	39	R364	46	73	L181	0	50
AP8530	Pink Pong	47	41	R65	54	73	L182	7	12
AP8550	Bit of Pink	54	43	R365	54	63	L183	69	94
AP8600	Cotton Candy Pink	56	43	R66	64	60	L192	34	32
AP8630	VI Pink	37	36	R366	58	73	L193	34	22
AP8650	In the Pink	31	49	R67	50	77	L194	39	63
AP8680	Pinkerbell	58	45	R367	46	77	L195	45	100
AP8700	Tickled Pink	53	52	R68	29	91	L196	49	77
AP8730	Screamin' Pink	22	37	R368	-	-	L197	38	76
AP8750	Hot Pink	6	51	R69	58	97	L198	28	100
AP8800	Sassy Pink	26	54	R369	54	89	L199	18	82
AP8840	Ruby Slippers	6	27	R70	58	73	L322	77	77
AP8850	Apollo Magenta	6	35	R370	78	91	L323	77	85
AP8900	Passion Pink	6	57	R71	58	77	L325	88	96
-				R371	50	69	L327	96	96
-				R72	58	73	L328	16	52
-				R372	54	63	L332	7	38
-				R73	74	81	L341	44	49
-				R373	58	56	L343	13	77
-				R74	23	97	L344	39	67
-				R374	74	89	L345	28	63
-				R75	58	97	L352	50	80
-				R375	-	-	L353	58	75
-				R76	54	97	L354	74	84
-				R376	54	81	L363	18	91
-				R77	39	97	L366	45	71
-				R377	39	100	L441	50	17
-				R78	39	73	L442	60	29
-				R378	29	77	L443	64	37
-				R79	23	97	L444	69	41
-				R80	64	100	L701	12	75
-				R81	69	100	L702	54	58
-				R381	-	-	L704	45	58
-				R82	46	100	L707	7	100
-				R382	23	100	L708	49	64
-				R83	46	100	L709	48	63
-				R383	39	100	L711	45	66
-				R84	50	100	L712	34	75
-				R384	35	100	L713	6	89

The manufacturer comparisons shown reflect close or similar matches only.

Color Matching Table

Apollo Numbering System

1000's = Diffusions
2000's = Color Corrections

3000's = Violets
4000's = Blues

5000's = Greens
6000's = Yellows

7000's = Oranges
8000's = Reds

APOLLO Number & Name		Front String % Channel 1	Front String % Channel 2	ROSCO Number	Front String % Channel 1	Front String % Channel 2	LEE Number	Front String % Channel 1	Front String % Channel 2
–				R85	29	100	L714	22	85
				R385	0	69	L715	18	85
–				R86	90	63	L716	12	91
–				R386	90	73	L719	35	76
–				R87	74	51	L721	23	90
–				R88	83	56	L722	63	100
–				R388	83	60	L723	29	82
–				R89	87	81	L724	55	76
–				R389	90	81	L725	59	63
–				R90	96	97	L728	65	63
–				R91	54	0	L729	79	96
–				R92	50	0	L730	74	59
–				R392	78	91	L735	92	95
–				R93	87	97	L736	69	0
–				R393	87	100	L738	92	71
–				R94	90	100	L744	54	22
–				R95	87	100	L746	–	–
–				R395	90	100	L747	49	26
–				R96	64	26	L748	39	34
–				R97	69	46	L763	64	33
–				R397	69	46	L764	64	29
–				R98	69	46	L765	64	25
–				R398	69	46	L767	58	8
–				R99	50	15	L770	45	8
–				–	–	–	L776	49	21
–				–	–	–	L777	34	8
–				–	–	–	L778	28	8
–				–	–	–	L779	40	15
–				–	–	–	L781	18	4
–				–	–	–	L789	100	46
–				–	–	–	L790	49	28
–				–	–	–	L793	6	42
–				–	–	–	L794	44	44
–				–	–	–	L795	7	58
–				–	–	–	L797	7	68
–				–	–	–	L798	7	74

The manufacturer comparisons shown reflect close or similar matches only.



Troubleshooting

Symptom	Cause	Solution
MXR 2 fails to start and home	No power from power supply	<ul style="list-style-type: none"> • Verify that the power supply is on • Verify that XLR pinout is compatible • Verify 4-pin cable is good
MXR 2 fails to respond to DMX	DMX control signal not connected	<ul style="list-style-type: none"> • Verify that DMX is present from console to power supply • Verify 4-pin cable is good
MXR 2 display window flashes	DMX control signal not connected	<ul style="list-style-type: none"> • Verify that DMX is present from console to power supply
MXR 2 operates erratically	Faulty DMX	<ul style="list-style-type: none"> • Verify that 4-pin cable runs from last MXR 2 back to power supply • Verify that DMX terminator is being used on the last DMX device in the control circuit
MXR 2 resets intermittently	Insufficient power	<ul style="list-style-type: none"> • Check that limits per power supply or per cable has not been exceeded
MXR 2 resets intermittently	Reset channel programmed	<ul style="list-style-type: none"> • Check to see if DMX information might have been programmed accidentally for the DMX reset channel
Gel frames won't travel to ends	Worn gel string	<ul style="list-style-type: none"> • Check to see if gel strings are old and heat damaged. Replace Gel String.
Color is inconsistent with other MXR 2s	Reset required	<ul style="list-style-type: none"> • Reset from console, power supply or MXR 2

Specifications

Design	
Power Supply	Apollo Smart Power® 75W, 200W and 400W or other compatible unit
Dimensions (HxWxD)	12¾" x 4" x 13¾" (323.85mm x 101.6mm x 349.25mm) With mounting tabs: 4.8" (121.92mm) deep
Weight	7.8 lbs. (3.54kg) including gel and mounting tabs
Material / Color	Aluminum, black or white textured matte powder coat. Custom colors available.
Aperture	Rear: 7½" Ø (190.5mm); Front: 9"H x 8½"W (228.6mm x 215.9mm)
Mounting System	Adjustable tabs 6¼" to 7½" (158.75mm to 190.5mm). Custom mounting options available.
Ports	4-pin XLR
Heat Deflectors	Apollo Gel Shield
Safety Cable	Yes

Operational	
Gel String Capability	2 strings; Front: 25 color frames; Back: 21 color frames (standard)
Gel String Loading	Spring loaded / self-tensioning
Cooling System	Variable speed, single fan with local or remote speed control
Gel String Max Speed	7 secs; Full strings
Addressing	LED display up to 510
Power Requirement	24VDC
Power Consumption	1.8 AMPS / 43 watts at 24VDC (fan & speed high)
DMX Channels Required	Three
Protocol Requirements	DMX 512 (1990)
Input Connector	XLR 4-pin male (power and control protocol)
Output Connector	XLR 4-pin female (power and control protocol)
LED Indicators	Menu
Certifications	RDM Compliant. Made in the USA.

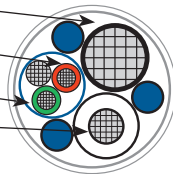
Pin 1: 0 Volts DC (14 Gauge)

Pin 2: Negative Data (22 Gauge)

Pin 3: Positive Data (22 Gauge)

Pin 4: Positive 24 Volts DC (14 Gauge)

Chassis: Ground Bounding (24 Gauge)



Product specifications shown are subject to change without notice.

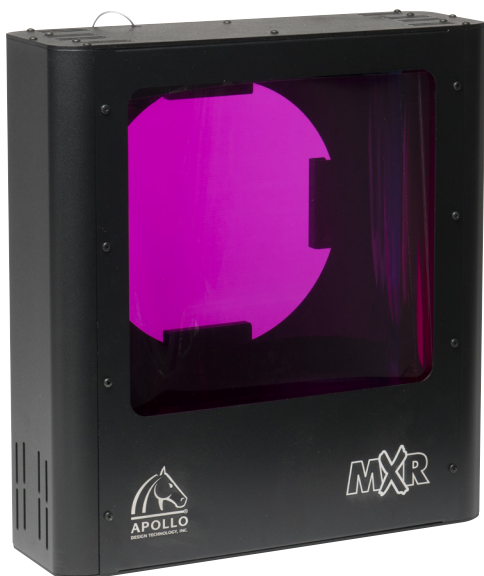


Warranty

- Items are covered for defects in materials and workmanship for one year, including repair parts and repair labor on defective item, from date of manufacturer invoice.
- The warranty covers freight for 30 days after initial purchase.
- The manufacturer does not cover any other loss resulting from product failure.
- Products being returned for warranty repair must display the original serial number. Removal of the serial number voids the product's limited warranty.
- Despite the care taken for the compilation of this manual, Apollo Design Technology, Inc cannot be held responsible for any damages resulting from errors that may appear in this manual. All efforts have been made to provide the most accurate, up-to-date instructions and illustrations possible.
- Gel strings are not included in this 1-year warranty.

Serial Number	
Date Purchased	
Purchased From	





MXR 2

Color Mixing Scroller



Apollo Design Technology, Inc.
260.497.9191
ApolloDesign.net